

**STRONG PARTNERS**

**SEVEN EVENTS**

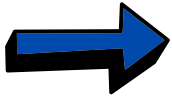
**BOOK NOW**



**CHALLENGE**  
powered by   
**Team Berghammer**

**READY?**

# Austria's GSX-R Challenge 2026



Austria's most popular brandcup starts into a new season. We are thanking our long-standing partners and participants for the incredible past 20 years.

The **most important factors** of the Austrian GSX-R Challenge:

- **Open regulations.** No tire binding. All model years of the GSX-R series are eligible to start
- **Three racing classes.** All qualifying sessions and races will start in three racing classes. Supersport (up to 600cc), Superbike (up to 750cc) and GP (from 751cc)
- **Strong partners.** Whether **Team Berghammer**, **WSB-Sport**, the company **Haslacher Suspension** or **Michelin**. Each partner contributes to making the challenge cheaper and more attractive for all drivers
- **- 25% off Suzuki Original Parts**
- **Starter package** for annual **season ticket drivers**
- **Tire service** at every event
- **Photographer** at each event
- **Free riding in 4 homogeneous** groups
- **Instructors** at every event
- **Chassis Service** Haslacher Suspension
- **Physiotherapy + massage** at every event
- **Six race weekends** on the **greatest racetracks** in Europe
- Technical support and **spare parts supplies** by **Team Berghammer**
- **Bakery at each event (unique and only with WSB-Sport)**
- The spirit of the SUZUKI family. **Fairness and fun** during the fight for the podium

As every year, the fight for the Austrian GSX-R crown 2026 begins with the registration! You are able to book this on the website [www.wsb-sport.com](http://www.wsb-sport.com) but it is limited to 3x30 participants!

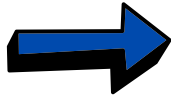
 TEAM BERGHAMMER-RACING

 [HTTPS://WSB-SPORT.COM](https://www.wsb-sport.com)



TOM\_RACER





# General

## 1.1 Motorcycles eligible to start:

SUZUKI GSX-R	(all years of construction)	Class Supersport (up to 600 cc)
SUZUKI GSX-R	(all years of construction)	Class Superbike (750cc)
SUZUKI GSX-R	(all years of construction)	Class GP (up to 751cc)

Maximum registration per racing class: 30 participants  
The field will start separately: Supersport, Superbike, GP

## 1.2 Dates 2026:

The dates of the season will be announced on the homepage of the organizer WSB-Sport. The SUZUKI GSX-R Challenge will take place on following dates:

- Race 1 Pannoniaring (Ungarn) 01th to 03th Mai. 2026
- Race 2 Slovakiaring (Slovakei) 22th to 24th April 2026
- Race 3 Brünn (Tschechien) 12th to 14th Juni 2026
- Race 4 Most (Tschechien) 10th to 12th Juli 2026
- Race 5 Rijeka / Grobnik (Kroatien) 07th to 09th Aug. 2026
- Race 6 Pannoniaring (Ungarn) 21th to 23th Aug. 2026
- Race 7 Slovakiaring (Slovakei) 11th to 13th Sep. 2026

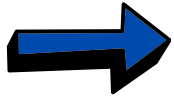
There will be FREE DRIVING per race weekend in all performance groups, a qualifying session, a race on Saturday and a race on Sunday. The GSX-R Challenge will compete in all three racing classes (Supersport, Superbike and GP).

Only registered GSX-R Challenge participants will be counted for the overall ranking. There is no STRIKE RESULT!

**Licensed drivers** may participate in the races for training purposes, but are generally **excluded from cups**, cash and non-cash prizes or points.

Starters for just one race are admitted and will be counted for the result.





# General

## 1.3 Race distance and classification

The race distance of the GSX-R Challenge Supersport, Superbike and GP is between 8 and 10 laps depending on the circuit.

### Points + Cups

Points distribution: 25, 20, 16, 13, 11, 10, 9, 8, 7, 6, 5, 4, 3, 2 and 1.

Trophies will only be awarded if there are at least 5 starters per weekend and class.

Supersport 600 trophies up to 5th place

Superbike 750 trophies up to 5th place

GP trophies up to 5th place

All drivers of the individual classes receive trophies in the overall standings up to the 8th place.

## 1.4 Training and race procedure: (Details on [www.wsb-sport.com](http://www.wsb-sport.com))

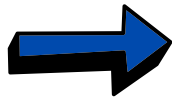
The regulations for 2026 as well as details on the starting procedure, time penalties and procedures can be found on <https://wsb-sport.com/Reglement>.

## 1.5 Exclusions:

The driver is completely excluded for:

- serious violations
- unsportsmanlike driving style
- non-compliance with flag signals





# Technical Regulations

The **original cube number** of the engine **must not be changed**.

## 2.1 Tires:

The GSX-R Challenge 2026 will start without tire binding in all three racing classes. The compounds and dimensions of the tires are optional.

## 2.2 Vehicle inspections:

The organizer reserves the right to carry out random checks and technical inspections of the motorcycles at any time.

## 2.3 Stickers:

The lettering Team Berghammer must be put on both sides of the original motorcycle fairing, as well as on the substitute fairing. This applies to all racing classes.

The required stickers will be handed out on the first appointment at latest. For a short e-mail to: [t.berghammer@sbg.at](mailto:t.berghammer@sbg.at) those stickers will be happily sent to your address in advance.

## Vorlage Beklebung:



# Technical Regulations

## 2.4 General

Company imprints of SUZUKI from competitors are not welcome in the GSX-R Challenge. We ask you to mask or remove them for qualifying or races out of your interest (media reuse). This applies to the complete motorcycle and the rider (leather suit, helmet,...). Race results and pictures of participants can be used for advertising purposes without additional payment to the person or people concerned, without the need for special consent. If the Team Berghammer logo is not affixed, any exclusive benefits for Cup drivers are eliminated.

## 2.5 Consequences :

- In the event of a violation of the regulations, the cup management will decide on exclusion, time penalties, relegation or similar in a meeting
- The Cup management reserves the right to exclude the driver from the challenge in the event of a violation. Without further demands on the organizers
- Protest- or legal recourse is excluded for the driver



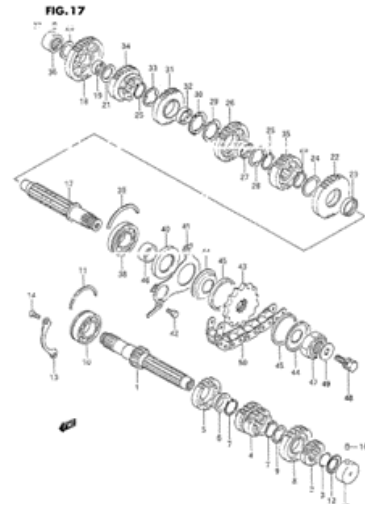


# Cup Package 2026

The Cup package of the GSX-R Challenge 2026 offers, as every year, **exclusive benefits** to every rider at a sensational price.

The official registration at WSB-Sport is mandatory

**-25% off Suzuki original spare parts** for the cup vehicle. Available through Team Berghammer



**Exclusive starter package for bookers of the annual season ticket**

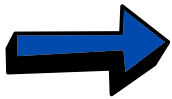


4x Team Berghammer stickers for the racing fairing

## 3.2 Chassis service

A well-tuned chassis is one of the foundations for being at the front of the GSX-R Challenge. That's why we have the company Haslacher Suspension on board on the racetrack in 2026. Offers available through Team Berghammer.





# Further Information

## 3.3 Annual season ticket "WSB-Sport"

In 2026 there will be an annual seasonal ticket for all events at WSB-SPORT. This year with several options. Prices and information can be found on [www.wsb-sport.com](http://www.wsb-sport.com).

### The annual season ticket includes:

- Entry fees for all race weekends (various options)
- Entry fees for all races suitable for the class, which are carried out as part of WSB-Sport
- exclusive starter package

### The annual pass does not include:

- Rental fees for transponders
- Box rental

## 4. General conditions:

- Participation is at your own risk, claims for damages against the organizer, its authorized people or other participants are excluded
- The instructions of the event staff must be followed
- The participant is liable for personal injury and property damage to third parties if he causes them through intent or serious negligence
- A participant can be excluded if he disturbs the event, or behaves negligent
- The organizer takes no responsibility for the condition of the circuit and its facilities
- Each participant must have sufficient foreign health insurance
- Each participant must wear leathers with EC protectors, boots, gloves, back protector and a full visor helmet
- There is an absolute ban on alcohol during participation. Also, the intake of strong medications is forbidden







**WSB-SPORT**  
RACE EVENTS



***Haslacher***  
*suspension* Ihr Spezialist rund ums Fahrwerk



STRONG PARTNERS

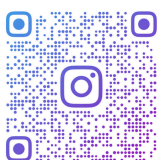


# DO YOU WANT TO BE PART OF THE GSX-R FAMILY?

FIND OUT NOW!

 TEAM BERGHAMMER-RACING

 [HTTPS://WSB-SPORT.COM](https://wsb-sport.com)



TOM\_RACER